

Q65-96KVP

LPP switch
 HPP switch

DISCLAIMERS

- Example with electric boiler as supplementary heat source. Solution may vary due to specific conditions.
- Control for DHW distribution is excluded, hence grey flow lines and unidentified components.
- Solution for DHW may vary due to country specific regulations.
- Fan Unit shown in profile, numbers of fans is presented in the technical documentation.

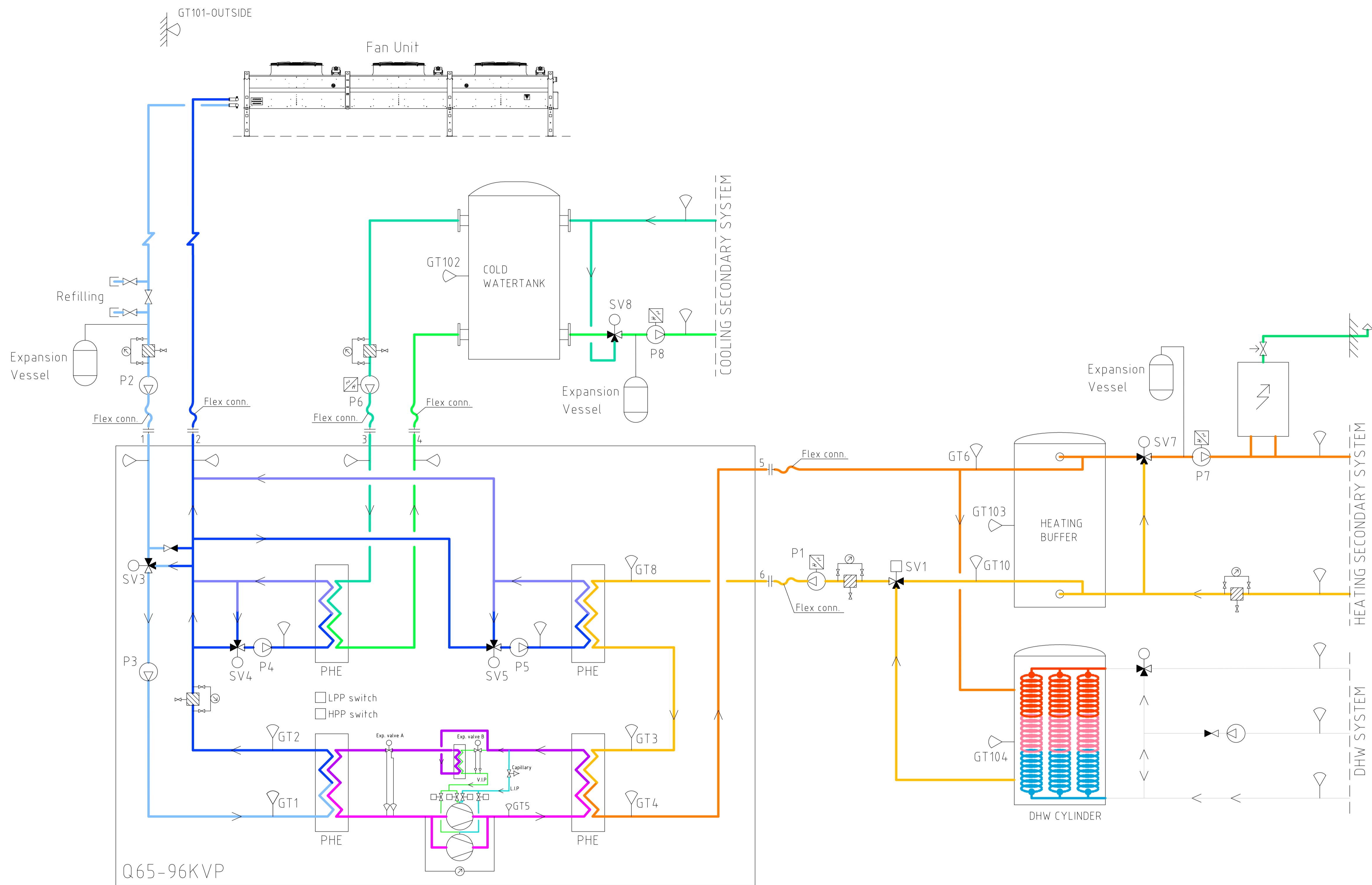
REV	REVISION TYPE	DATE	SIGN
PHASE			

QUANTUM INDUSTRIES
KVP Series - docking principle
Q65-96KVP



A	XXX	phone XXX-XXX	fax XXX-XXX
K	XXX	phone XXX-XXX	fax XXX-XXX
E	XXX	phone XXX-XXX	fax XXX-XXX
V	XXX	phone XXX-XXX	fax XXX-XXX
SPR	XXX	phone XXX-XXX	fax XXX-XXX
BR	XXX	phone XXX-XXX	fax XXX-XXX
M	XXX	phone XXX-XXX	fax XXX-XXX
Pw	PIPEWORK	phone +44(0)7860867646	fax -


PROJECT NUMBER	DRAWN BY	MANAGED BY
-	J.E.	
DATE	APPROVED BY	
2023-09-25		
Quantum Industries		
KVP series - docking principle		
Q65-96KVP		
SCALE	DRAWING NUMBER	REV
-	Q-65-96-KVP-6-001	

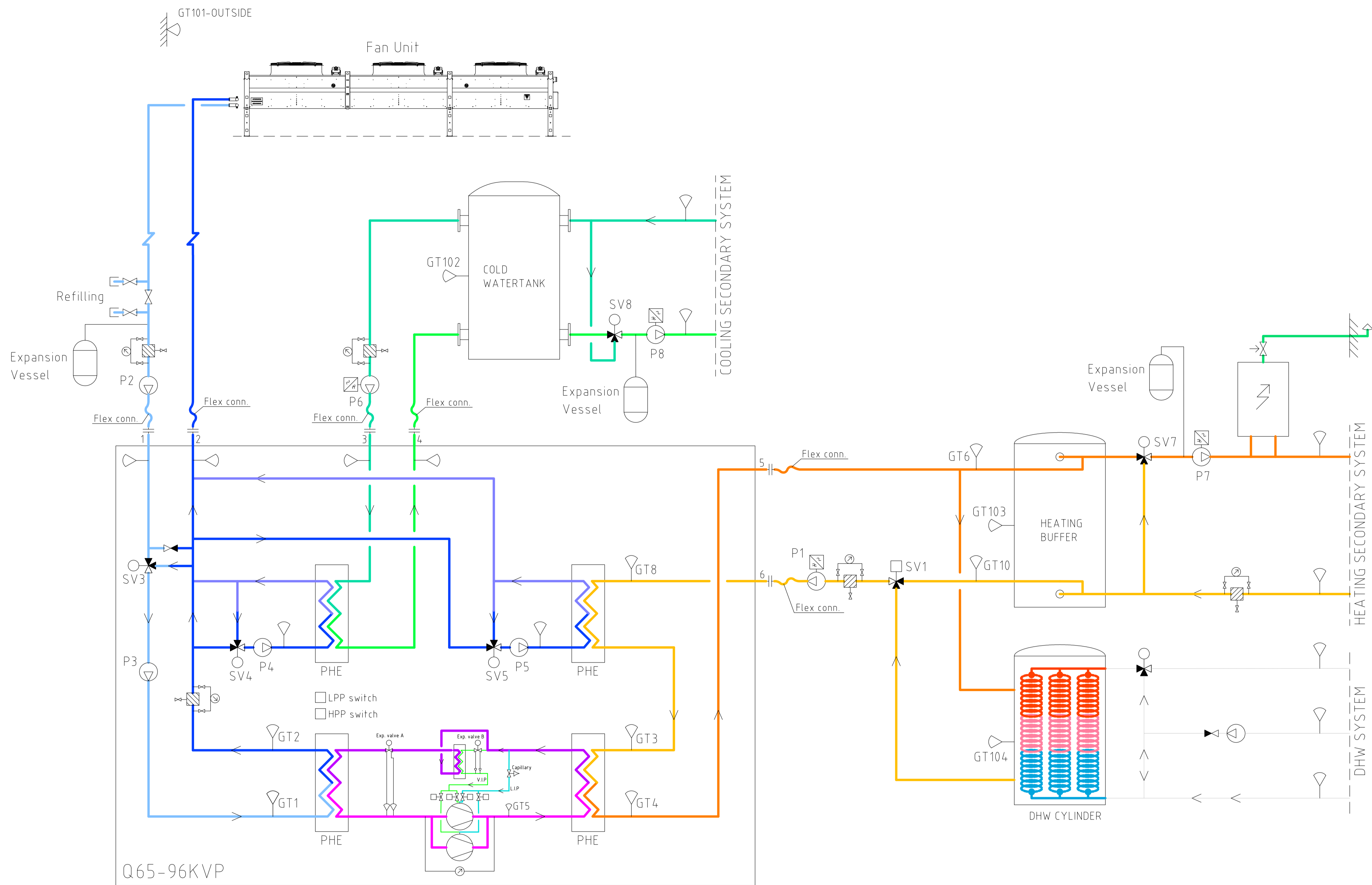


Q65-96KVP

DISCLAIMERS

- Example with electric boiler as supplementary heat source. Solution may vary due to specific conditions.
- Control for DHW distribution is excluded, hence grey flow lines and unidentified components.
- Solution for DHW may vary due to country specific regulations.
- Fan Unit shown in profile, numbers of fans is presented in the technical documentation.

REV	REVISION TYPE	DATE	SIGN
PHASE			
QUANTUM INDUSTRIES KVP Series - docking principle Q65-96KVP			
 QUANTUM HEAT PUMPS FOR SUSTAINABLE CITIES			
A	XXX	phone XXX-XXX	fax XXX-XXX
K	XXX	phone XXX-XXX	fax XXX-XXX
E	XXX	phone XXX-XXX	fax XXX-XXX
V	XXX	phone XXX-XXX	fax XXX-XXX
SPR	XXX	phone XXX-XXX	fax XXX-XXX
BR	XXX	phone XXX-XXX	fax XXX-XXX
M	XXX	phone XXX-XXX	fax XXX-XXX
Pw	PIPEWORK	phone +44(0)7860867646	fax -
PROJECT NUMBER	DRAWN BY	MANAGED BY	
-	J.E.		
DATE	APPROVED BY		
2023-09-25			
Quantum Industries			
KVP series - docking principle			
Q65-96KVP			
SCALE	DRAWING NUMBER	REV	
-	Q-65-96-KVP-6-001		

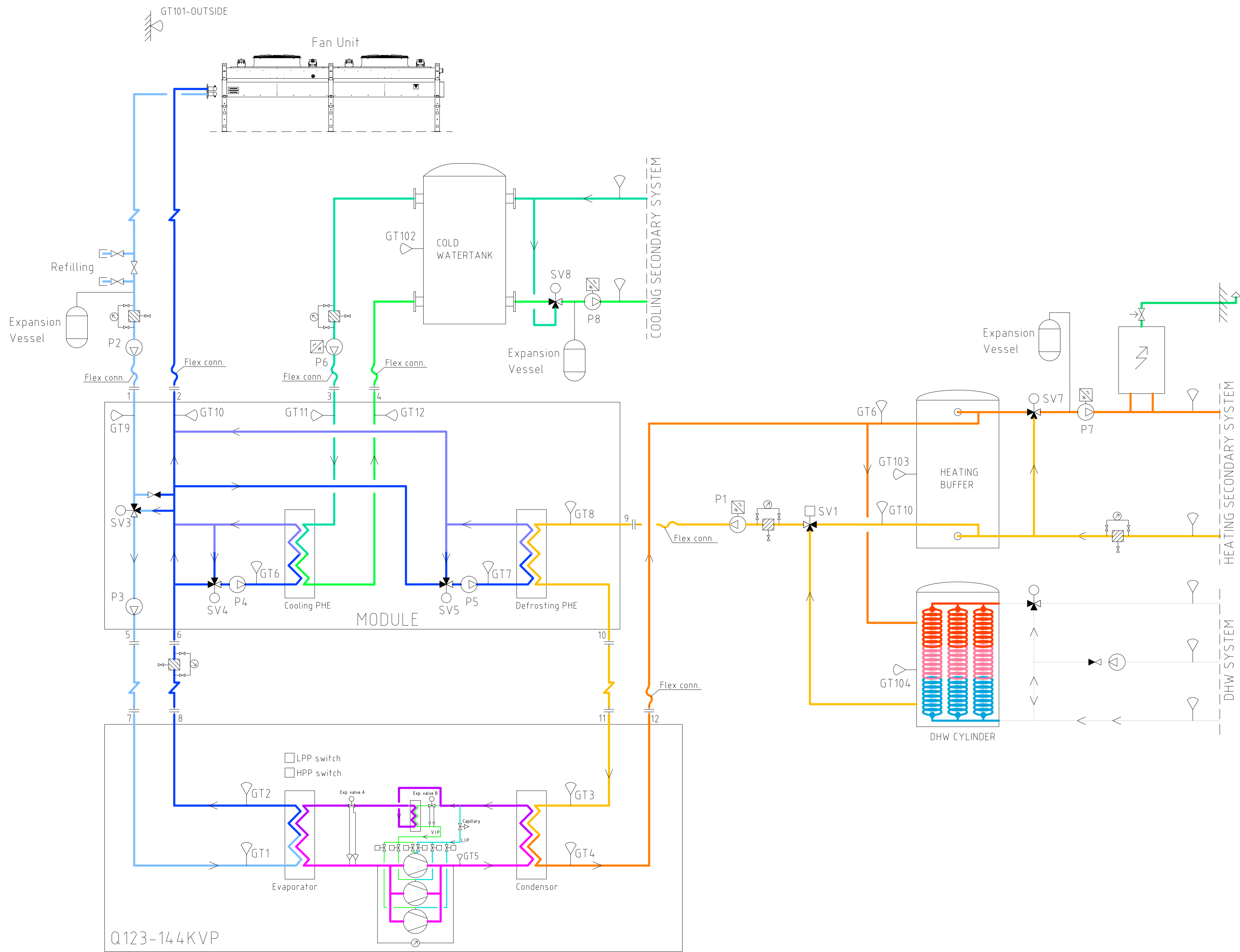


Q65-96KVP

DISCLAIMERS


- Example with electric boiler as supplementary heat source. Solution may vary due to specific conditions.
- Control for DHW distribution is excluded, hence grey flow lines and unidentified components.
- Solution for DHW may vary due to country specific regulations.
- Fan Unit shown in profile, numbers of fans is presented in the technical documentation.

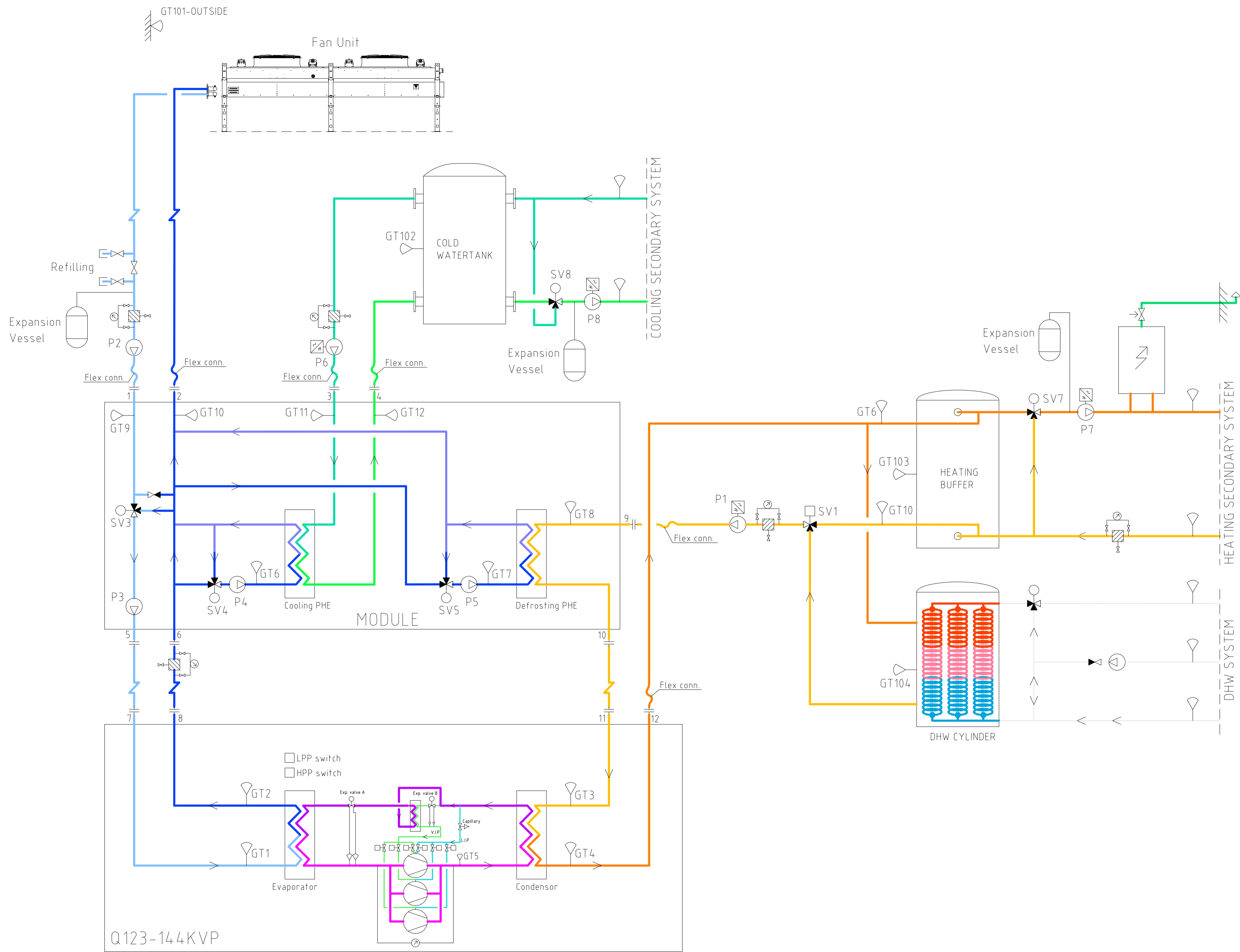
REV	REVISION TYPE	DATE	SIGN
PHASE			
QUANTUM INDUSTRIES KVP Series - docking principle Q65-96KVP			
QUANTUM HEAT PUMPS FOR SUSTAINABLE CITIES			
A	XXX	phone XXX-XXX	fax XXX-XXX
K	XXX	phone XXX-XXX	fax XXX-XXX
E	XXX	phone XXX-XXX	fax XXX-XXX
V	XXX	phone XXX-XXX	fax XXX-XXX
SPR	XXX	phone XXX-XXX	fax XXX-XXX
BR	XXX	phone XXX-XXX	fax XXX-XXX
M	XXX	phone XXX-XXX	fax XXX-XXX
Pw	PIPEWORK	phone +44(0)7860867646	fax -
PROJECT NUMBER	DRAWN BY	MANAGED BY	
-	J.E.		
DATE	APPROVED BY		
2023-09-25			
Quantum Industries			
KVP series - docking principle			
Q65-96KVP			
SCALE	DRAWING NUMBER	REV	
-	Q-65-96-KVP-6-001		



DISCLAIMERS


- Example with electric boiler as supplementary heat source. Solution may vary due to specific conditions.
- Control for DHW distribution is excluded, hence grey flow lines and unidentified components.
- Solution for DHW may vary due to country specific regulations.
- Fan Unit shown in profile, numbers of fans is presented in the technical documentation.

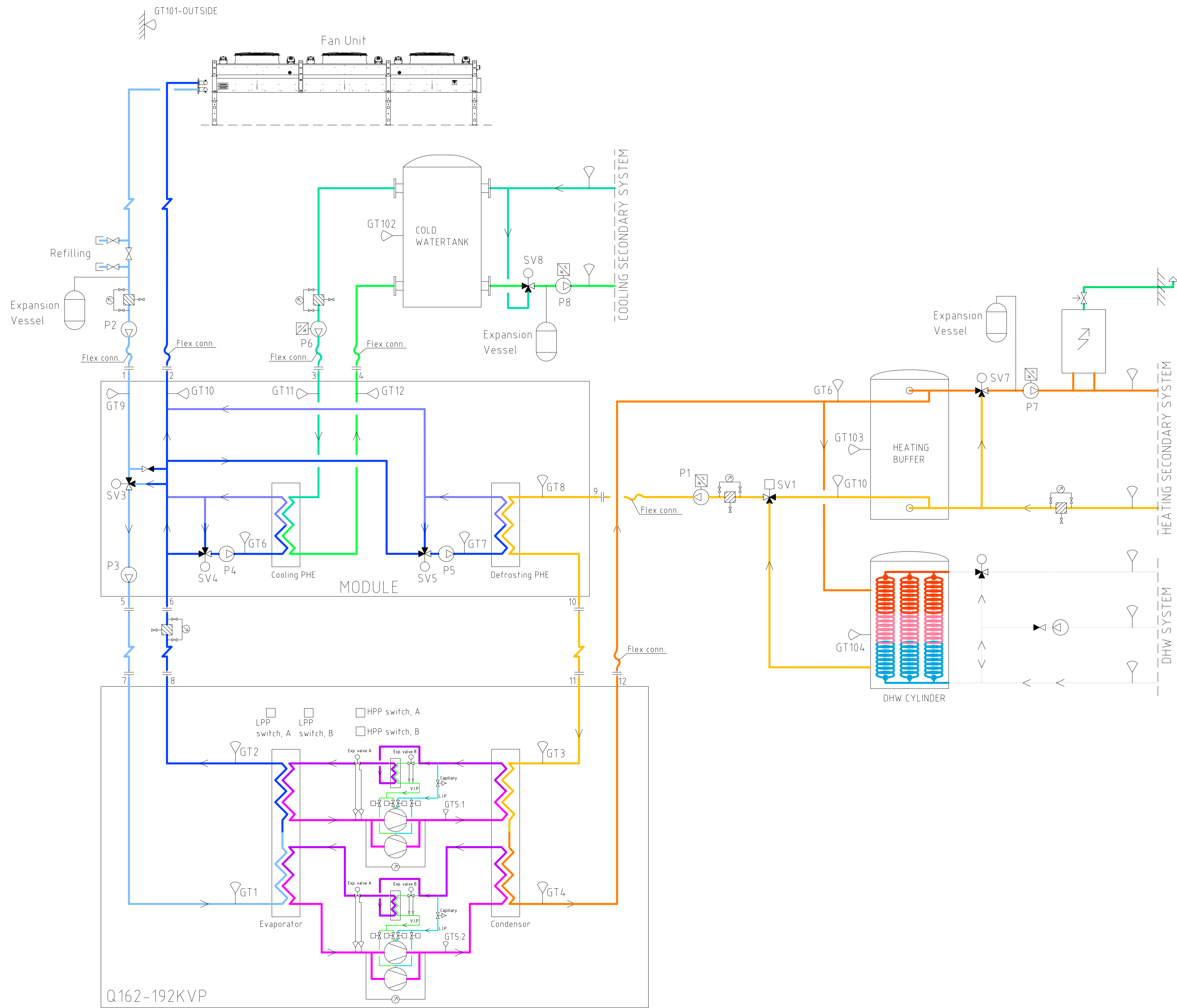
REV	REVISION TYPE	DATE	SIGN
PHASE			
QUANTUM INDUSTRIES KVP Series - docking principle Q123-144KVP			
 QUANTUM HEAT PUMPS FOR SUSTAINABLE CITIES			
A	XXX	phone XXX-XXX	fax XXX-XXX
K	XXX	phone XXX-XXX	fax XXX-XXX
E	XXX	phone XXX-XXX	fax XXX-XXX
V	XXX	phone XXX-XXX	fax XXX-XXX
SPR	XXX	phone XXX-XXX	fax XXX-XXX
BR	XXX	phone XXX-XXX	fax XXX-XXX
M	XXX	phone XXX-XXX	fax XXX-XXX
Pw	PIPEWORK	phone +44(0)7860867646	fax -
PROJECT NUMBER	DRAWN BY	MANAGED BY	
-	J.E.		
DATE	APPROVED BY		
2023-09-25			
Quantum Industries			
KVP series - docking principle			
Q123-144KVP			
SCALE	DRAWING NUMBER	REV	
-	Q-123-144-KVP-6-001		



DISCLAIMERS


- Example with electric boiler as supplementary heat source. Solution may vary due to specific conditions.
- Control for DHW distribution is excluded, hence grey flow lines and unidentified components.
- Solution for DHW may vary due to country specific regulations.
- Fan Unit shown in profile, numbers of fans is presented in the technical documentation.

REV	REVISION TYPE	DATE	SIGN
PHASE			
QUANTUM INDUSTRIES KVP Series - docking principle Q123-144KVP			
 QUANTUM HEAT PUMPS FOR SUSTAINABLE CITIES			
A	XXX	phone XXX-XXX	fax XXX-XXX
K	XXX	phone XXX-XXX	fax XXX-XXX
E	XXX	phone XXX-XXX	fax XXX-XXX
V	XXX	phone XXX-XXX	fax XXX-XXX
SPR	XXX	phone XXX-XXX	fax XXX-XXX
BR	XXX	phone XXX-XXX	fax XXX-XXX
M	XXX	phone XXX-XXX	fax XXX-XXX
Pw	PIPEWORK	phone +44(0)7860867646	fax -
PROJECT NUMBER	DRAWN BY	MANAGED BY	
-	J.E.		
DATE	APPROVED BY		
2023-09-25			
Quantum Industries			
KVP series - docking principle			
Q123-144KVP			
SCALE	DRAWING NUMBER	REV	
-	Q-123-144-KVP-6-001		



DISCLAIMERS

- Example with electric boiler as supplementary heat source. Solution may vary due to specific conditions.
- Control for DHW distribution is excluded, hence grey flow lines and unidentified components.
- Solution for DHW may vary due to country specific regulations.
- Fan Unit shown in profile, numbers of fans is presented in the technical documentation.

REV	REVISION TYPE	DATE	SIGN
PHASE			
QUANTUM INDUSTRIES KVP Series - docking principle Q162-192KVP			
 QUANTUM HEAT PUMPS FOR SUSTAINABLE CITIES			
A	XXX	phone XXX-XXX	fax XXX-XXX
K	XXX	phone XXX-XXX	fax XXX-XXX
E	XXX	phone XXX-XXX	fax XXX-XXX
V	XXX	phone XXX-XXX	fax XXX-XXX
SPR	XXX	phone XXX-XXX	fax XXX-XXX
BR	XXX	phone XXX-XXX	fax XXX-XXX
M	XXX	phone XXX-XXX	fax XXX-XXX
Pw	PIPEWORK	phone +44(0)7860867646	fax -
PROJECT NUMBER	DRAWN BY	MANAGED BY	
-	J.E.		
DATE	APPROVED BY		
2023-09-25			
Quantum Industries			
KVP series - docking principle			
Q162-192KVP			
SCALE	DRAWING NUMBER	REV	
-	Q-162-192-KVP-6-001		